

Emergency Support Function (ESF) 9 Search and Rescue

Lead Coordinating Agency: Escambia County Department of Fire-Rescue

Support Agencies: Department of Public Safety
City of Pensacola Fire Department
Escambia Search and Rescue, Inc

I. Purpose

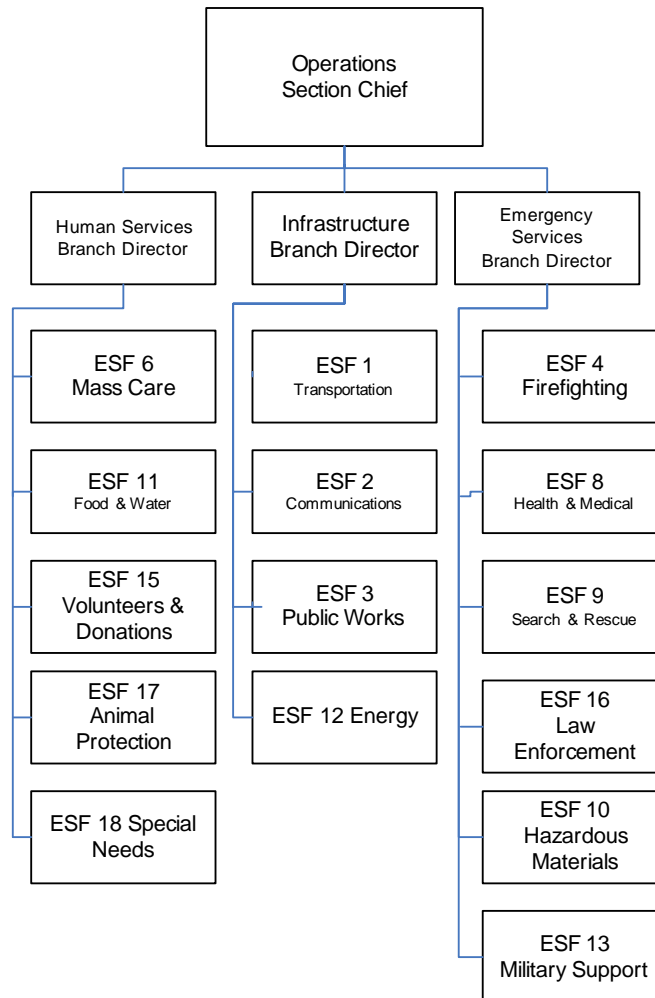
The purpose of Emergency Support Function 9 (ESF-9) is to provide search and rescue coordination and support services in support of emergency events in Escambia County. Emergency Support Function 9 can provide personnel and resources to support preparedness, response, recovery and mitigation in support of the primary emergency management objectives. ESF-9 resources are used when individual agencies are overwhelmed and County Emergency Response Team requests additional fire service assistance.

II. Concept of Operations

A. GENERAL

1. Procedures protocols and plans for disaster response activities are developed to govern staff operations at the Escambia Emergency Operations Center and in the field. These are in the form of the Comprehensive Emergency Management Plan (CEMP) and corresponding Appendices, Incident Annexes, Support Annexes and Standard Operating Procedures, which describe ESF-9 capabilities. Periodic training and exercises are also conducted to enhance effectiveness.
3. In a large event requiring local and State mutual aid assistance, ESF-9 will work with its support agency counterparts to seek and procure, plan, coordinate and direct the use of any required assets.
4. Throughout the response and recovery periods, ESF-9 will evaluate and analyze information regarding search and rescue, and prevention requests for response, develop and update assessments of the search and rescue situation and status in the impact area, and do contingency planning to meet anticipated demands or needs.
5. When an event is focused in scope to a specific type or response mode technical and subject matter expertise may be provided by an appropriate person(s) from a supporting agency with skills pertinent to the type of event, who will advise and/or direct operations within the context of the Incident Command System structure.

Incident Command System Structure: ESF 9 – Search and Rescue



B. ORGANIZATION

1. COUNTY

- a. During an activation of the County Emergency Operations Center, support agency staff is integrated with the Escambia County Fire Rescue staff to provide support that will allow for an appropriate, coordinated and timely response.
- b. During an emergency or disaster event, the Emergency Operations Center Operations Section Chief will coordinate the support resources from the support agencies with the Emergency Services Branch Chief.
- c. During the response phase, ESF-9 will evaluate and analyze information regarding search and rescue requests. Also, ESF-9 will develop and update assessments of the search and rescue status in the impact area and do contingency planning to meet anticipate demands and needs.
- d. Escambia County Department of Fire-Rescue will develop and maintain the overall ESF-9 Emergency Operations Plan and accompanying Appendices,

and Standard Operating Guidelines that govern response actions related to emergencies. However support agencies may develop and maintain their own similar documents for internal use, which must be compatible with and in support of the overall Emergency Operations Plan. All such documents will be in compliance with the National Response Plan, The National Incident Management System, the Incident Command System and the County Comprehensive Emergency Management Plan.

C. ALERTS/NOTIFICATIONS

1. Upon activation of the CEMP, the Department of Public Safety will notify the point of contact for ESF-9 through multiple methods.
2. The Lead ESF 9 Coordinating Agency representative or designee will coordinate all activities of ESF-9.
3. Upon instructions to activate ESF-9, The Lead Coordinating Agency will implement procedures to notify and mobilize all personnel, facilities, and physical resources likely to be needed, based on the emergency circumstance.

D. ACTIONS

Actions carried out by ESF-9 are grouped into phases. Each phase requires specific skills and knowledge to accomplish and requires significant cooperation and collaboration between all supporting agencies and the intended recipients of service. ESF-9 encompasses a full range of activities from training to the provision of field services. It also functions as a coordinator and, at times, assumes direct operational control of provided services. The following services may be provided:

- Assessment of Search and Rescue needs and potential impacts.
- Search and Rescue personnel.
- Search and Rescue equipment and supplies.
- Evacuation and Re-entry support.
- Emergency responder health and safety.
- Radiological/chemical/biological hazards.
- Mental health and crisis counseling for responders.
- Search and Rescue Public Information and risk communication.
- Search and Rescue Management, Command and control of assets.
- Search and Rescue activities related to terrorist threats and/or events.
- Logistical Staging areas and Points of Distribution/Dispensing.
- Catastrophic incident and alternate Search and Rescue facility support.

1. PREPAREDNESS ACTIONS

- a. Actions and activities that develop Search and Rescue response capabilities may include planning, training, orientation sessions, and exercises for ESF-9 personnel (i.e., Local, State, Regional, and Federal) and other emergency support functions that will respond with ESF-9. This involves the active participation of inter-agency preparedness organizations, which collaborate in such activities on a regular basis.

- b. Local and State search and rescue teams will jointly address planning issues on an on-going basis to identify response zones, potential staging areas, and potential medical facilities and establish specialized teams.
- c. Coordinate planning with ESF-9 support agencies, Regional Domestic Security Task forces, and other emergency support functions to refine Search and Rescue Operations.
- d. Coordinate the development and refinement of procedures to be used in the following field surveys: Rapid Impact Assessment (i.e., recon), Community Search and Rescue assessment.
- e. Coordinate training and exercises for EOC and Search and Rescue Team members.
- f. Prepare and maintain standard operating procedures, resource inventories, personnel rosters and resource mobilization information necessary for implementation of the responsibilities of the lead agency. Ensure lead agency personnel are trained in their responsibilities and duties.
- g. Establish Mutual Aid procedures for the following resources; Urban Search and Rescue, Interoperable Communications and Command Vehicles, Resource Management and Logistical Support.
- h. Develop and implement emergency response and Search and Rescue strategies.
- i. Coordinate and participate in the development and presentation of training courses for ESF-9 personnel, provide information on critical facilities to the Department of Public Safety, Division of Emergency Management and develop protocols for frequently provided services.
- j. Maintain liaison with support agencies.
- k. Conduct vulnerability analysis at critical facilities and make recommendations to improve the physical security.
- l. Conduct all hazards exercises involving ESF-9.
- m. Preposition response resources when it is apparent that fire-search and rescue resources will be necessary.

2. RESPONSE ACTIONS

- a. Coordinate operations at the ESF-9 office in the County Emergency Operations Center and/or at other locations as required.
- b. Establish and maintain a system to support on-scene direction and control and coordination with county EOC, regional task force and State EOC.
- c. Implementation of Impact Assessment Teams to determine post-storm impact to Emergency Services functional group resources and ability to perform Continuity of Operations of essential functions.
- d. Implement Mutual Aid procedures to assist with supporting issues related to a terrorist event.
- e. Search and Rescue support RDSTF in the investigation of a terrorist attack.

- f. Relocate fire-search and rescue resources when it is apparent that they are endangered by the likely impacts of the emergency situation.
- g. Monitor and direct Search and Rescue resources and response activities.
- h. Participate in EOC briefings, Incident Action Plans, Situation Reports and meetings.
- i. Coordinate with support agencies, as needed, to support emergency activities.
- j. Coordinate with other County ESFs to obtain resources and to facilitate an effective emergency response among all participating agencies.
- k. Coordinate all local resources as required. Once local resources are expended, solicit Logistics Section for additional assistance in meeting unmet resource needs.

3. RECOVERY ACTIONS

- a. Continue to provide support as required until response activities are concluded or until they can be managed and staffed by the primary incident agency or jurisdictions. This will include support to other jurisdictional or agency incident commanders.
- b. Continue to provide support as required to support the recovery phase.
- c. Initiate financial reimbursement process for these activities when such support is available.

4. MITIGATION ACTIONS

- a. Identify and seek funds for retrofitting critical facilities and providing auxiliary power.
- b. Provide personnel with the appropriate expertise to participate in activities designed to reduce or minimize the impact of future disasters.

E. DIRECTION AND CONTROL

- 1. The ESF-9 system operates in two arenas; 1) the county Emergency Operations Center; 2) field locations.
- 3. During emergency activations, all management decisions regarding County or regional response are made in coordination with County Emergency Operations Center ESF liaisons and incident management as appropriate.
- 4. A staffing directory and the ESF-9 Standard Operating Procedures, its accompanying Appendices and Standard Operating Procedures are maintained by the Lead Coordinating Agency and updated as required.
- 5. All search and rescue field operations will be coordinated through ESF 9 in the County Emergency Operations Center.
- 6. In accordance with a mission assignment from ESF-9, and further mission tasking by a Local primary agency, each support organization assisting ESF-9 assignment will retain administrative control over its own resources and personnel but will be under the operation control of ESF-9. Delegation of mission

operational control may be delegated to a Management Support Unit, Multi-Agency Coordination Team or a local entity.

F. RESPONSIBILITIES

1. LEAD COORDINATING AGENCY – ESCAMBIA COUNTY DEPARTMENT OF FIRE-RESCUE

- a. Provide leadership in directing, coordinating and integrating overall County efforts to provide Search and Rescue assistance to affected areas and populations.
- b. Staff and operate a National Incident Management system compliant command and control structure (i.e., Incident Command System) to assure that services and staff are provided to areas of need.
- c. Coordinate and direct the activation and deployment of County agencies Search and Rescue personnel, supplies, and equipment and provide certain direct resources.
- d. Evaluate the emergency situation, make strategic decisions, identify resource needs and secure resources required for field operations.
- e. Monitor Search and Rescue emergency response and recovery operations. ESF 9 Representatives or designees will coordinate all State and Federal Search and Rescue resources into the affected areas from staging areas.
- f. Manage Search and Rescue and other emergency incidents in accordance with each department's Standard Operating Procedures and under the direction of ESF 9 Representatives or designee.
- g. Provide assistance in initial needs assessment, and augment Search and Rescue operations through specialized response capabilities.
- h. Make specific requests for Search and Rescue assistance to the State ESF 9/State Fire Marshal's Office, through the Escambia County Liaison, as needed. The State will activate resources through the State Emergency Response Plan.
- i. Continue to re-assess priorities and strategies, throughout the emergency, according to the most critical Search and Rescue needs.
- j. Demobilize resources and deactivate the ESF 9 station upon direction from the County Incident Commander.

2. SUPPORT AGENCIES

(NOTE: Each Support Agency should review its own roles and responsibilities and revise in conjunction with the Department of Financial Services, The Division of the State Fire Marshall)

- a. Support agencies will provide assistance to the Emergency Support Function with services, staff, equipment, and supplies that compliment the entire emergency response effort as the County Emergency Response Team addresses the consequences generated by the hazards that may impact the County (i.e., severe weather, tropical cyclones, environmental biological, terrorism, technological, and mass migration, etc.). Because services and resources are subject to change from time to time, emergency coordinators are responsible for frequently updating their resources capabilities with the ESF-9.

- b. The Department of Public Safety will provide EOC support, conduct briefings, direct needs assessments, distribute key information, and serve as liaison to the State EOC to request resources.

G. FINANCIAL MANAGEMENT

1. During a response, each agency/department is responsible for recording and tracking its own expenditures and seeking reimbursement from the appropriate resource after the event. If a federally declared disaster exists, then a reimbursement formula is established by the Federal Emergency Management Agency that may be as much as 100 percent, but usually does not exceed 75 percent.
2. Expenditures by other department entities will be documented by those entities and submitted directly to the Finance/Administration Section or a designated Finance Service officer as soon as possible.

H. REFERENCES AND AUTHORITIES

- State ESF-9
- Florida Field operations Guide (FFOG)
- Fire Suppression Draft – Forestry
- The Guidelines of the State Emergency Response Team for Wildfire Events.” 1999 version
- The Florida fire Chiefs’ Association, Fire-Rescue Disaster Response Plan.