

Emergency Support Function (ESF) 17 Animal Protection

Lead Coordinating Agency: Escambia County Department of Public Safety, Division of Animal Control

Support Agencies: Escambia County Extension
Escambia County Department of Parks and Recreation
Escambia County Sheriff's Office - Livestock Officer
Humane Society of Pensacola
Wildlife Sanctuary of Northwest Florida
Neighborhood and Environmental Services, Mosquito Control
Local Veterinarians

I. Purpose

The purpose of Emergency Support Function-17 (ESF-17) is to provide for the coordination of local resources in response to small pet, livestock, and exotic animal care needs before, during, and following a significant natural or technological disaster. Animal issues are often overlooked in the planning process for disasters. This lack of planning, caused by the belief that animals can fend for themselves, leads to serious problems when these animals are forced from their habitats due to injury or hunger. By developing operational procedures to care for these animals prior to such an event, this Emergency Support Function will help reduce animal-related problems in emergencies.

ESF-17 will provide overall management, coordination and prioritization of countywide Animal Control services and assets to support pet and livestock animal needs in the event of a major emergency or disaster.

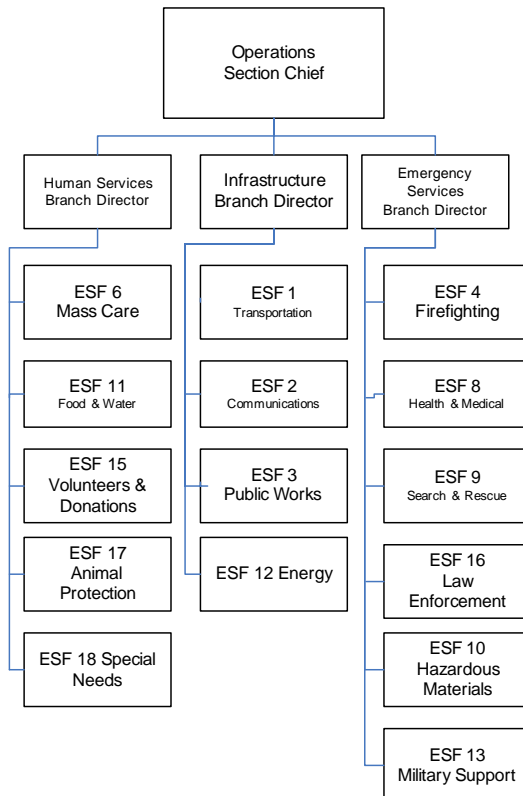
ESF-17 readiness planning is guided by the following assumptions:

- Human lives may be lost due to the refusal of owners to evacuate without their pets or livestock. Public education by the County and animal-related organizations is needed to make the people aware of pet sheltering facilities available, and the need to plan in advance.
- The large number of homeless/injured pets, livestock, and exotic animals, would be a health and nuisance/bite threat, which would necessitate a response to address the capture and subsequent sheltering of these animals.
- Triage and treatment of sick and injured animals to include euthanasia, if necessary, would have to be coordinated by veterinarians at designated shelters and private offices for small pets, and in the field for larger livestock.
- Importing of commercial pet/livestock food for the feeding of animals would need to be coordinated with the State ESF 17. Food drops for wild animals would be organized by various wild-animal-related groups and state agencies.
- The accumulation of animal carcasses throughout the County must be removed to approved solid waste dumping sites and/or burnt or buried on site.
- Sheltered animals will need to be re-united with their owners after the disaster.

II. Concept of Operations

A. GENERAL

1. Procedures protocols and plans for disaster response activities are developed to govern staff operations at the Escambia Emergency Operations Center and in the field. These are in the form of the Comprehensive Emergency Management Plan (CEMP), corresponding Appendices, and Standard Operating Procedures, which describe ESF-17 responsibilities. Periodic training and exercises are also conducted to enhance effectiveness.
2. In a large event requiring local or State mutual aid assistance, ESF-17 will work with its support agency counterparts to seek and procure, plan, coordinate and direct the use of any required assets.
3. Throughout the response and recovery periods, ESF-17 will evaluate and analyze information regarding the availability of animal care and control services.
4. Requests for Animal Control assistance will be channeled through the Animal Regulation and Control dispatch as much as feasible, with calls taken by Rescue dispatcher at other times. At the time of activation of the EOC, ESF-17 will be staffed on a 24-hour schedule to interface and communicate with other agencies and prioritize assistance requests. The Director of Animal Regulation and Control, or a designee, will be deployed to the EOC to coordinate actions with other agencies represented in the EOC.



Incident Command System Structure: ESF 17 – Animal Protection

B. ORGANIZATION

1. COUNTY

- a. ESF 17 will operate under the ICS structure through the CEMP, working under the IC, but responsible directly to the Operations Section Chief.
- b. During an activation of the County Emergency Operations Center, support agency staff is integrated with the Escambia County Animal Regulation and Control staff to provide support that will provide for an appropriate, coordinated and timely response.
- c. During an emergency or disaster event, the Emergency Operations Center, Operations Section Chief will coordinate the support resources from the support agencies with the Human Services Branch Chief.
- d. During the response phase, ESF-17 will evaluate and analyze information regarding volunteers and donations requests. Also, ESF-17 will develop and update assessments of the requirements for resources to provide animal care and control services in the impacted area and undertake contingency planning to meet anticipated demands and requirements.
- e. Division of Animal Control develops and maintains the overall ESF-17 Standard Operating Procedures that govern response actions related to emergencies. However, support agencies may develop and maintain their own similar documents for internal use, which must be compatible with and in support of the overall CEMP. All such documents will be in compliance with the National Response Plan, the National Incident Management System, and the Incident Command System.
- f. Staffing of ESF 17 positions will be accomplished through using resources of the Escambia County Department of Public Safety, Division of Animal Control along with personnel from ESF 17 support agencies and trained and screened unaffiliated volunteers.

C. ALERTS/NOTIFICATIONS

1. Upon activation of the CEMP, the Department of Public Safety will notify the point of contact for ESF-17 through multiple methods.
2. The Lead ESF 17 Coordinating Agency representative or designee will coordinate all activities of ESF-17.
3. Upon instructions to activate ESF-17, The Lead Coordinating Agency will implement procedures to notify and mobilize all personnel, facilities, and physical resources likely to be needed, based on the emergency circumstance.

D. ACTIONS

Actions carried out by ESF-17 are grouped into phases. Each phase requires specific skills and knowledge to accomplish and requires significant cooperation and collaboration between all supporting agencies and the intended recipients of service. ESF-17 encompasses a full range of activities from training to the provision of field services. It also functions as a coordinator and, at times, assumes direct operational control of provided services.

1. PREPAREDNESS ACTIONS

- a. Actions and activities that develop Animal Protection response capabilities may include planning, training, orientation sessions, and exercises for ESF-17 personnel (i.e., County, State, Regional, and Federal).
- b. Coordinate planning with ESF-17 support agencies, Regional Domestic Security Task forces, and other emergency support functions to refine Animal Protection operations.
- c. Coordinate the deliver of preparedness programs that address small pet issues. The Escambia County Extension Service will coordinate preparedness and response measures that address livestock or other large animals.
- d. Identify local “pet-friendly” resources that can provide services, solutions, and options for residents and visitors with pets. Provide the information through a public campaign effort as appropriate.
- e. Stockpile water and food supplies at the Escambia County Animal Shelter on Fairfield Drive for domestic small animal needs and at Langley Bell 4H Camp on Nine Mile Road for large animal needs, and at the Equestrian Center on Mobile Highway for horses.

2. RESPONSE ACTIONS

- a. Coordinate with support agencies to offer support in identifying shelter options for animals whose owners will not evacuate without their pets. Animal Control will accept pets from Special Needs Shelter clients to the extent possible.
- b. Identify, mobilize and deploy assessment representatives to the disaster area(s) to determine the specific health and safety needs and priorities. ESF-17 will coordinate with other Emergency Support Functions represented at the EOC to provide support to aid in the relief of nuisance and health-related problems involving animals and their impact on human relief efforts.
 - Provide assistance in the following areas: capture of injured and displaced animals, sheltering, medical care, feeding, relocation and reunification with owners, acquisition of additional food and supplies from vendors to support the relief efforts, continued coordination with other ESFs for timely and proper carcass disposal.

3. RECOVERY ACTIONS

Provide continued care of sheltered animals, provide an extended network for the adoption of unclaimed animals, and assist in the relocation of sick and injured animals to permanent facilities until a return to normal operations.

4. MITIGATION ACTIONS

Develop and deliver guidance for farmers and owners of livestock on measures that can be take to reduce losses from scenario disaster events.

E. DIRECTION AND CONTROL

1. The ESF-17 system operates at two levels: 1) County Emergency Operations Center; and 2) Field operations.
2. A staffing directory and the ESF-17 Emergency Operations Plan, its accompanying Appendices, Annexes and Standard Operating Procedures are maintained by the lead and supporting agencies with status of the call lists updated periodically as appropriate.

F. RESPONSIBILITIES

1. LEAD COORDINATING AGENCY – ESCAMBIA COUNTY DEPARTMENT OF PUBLIC SAFETY, DIVISION OF ANIMAL CONTROL

- a. Notify, activate, and mobilize all agencies assigned to the ESF.
- b. Coordinate all support agency actions in performance of missions assigned to this ESF.
- c. Coordinate requests for assistance and additional resources necessary during performance of the mission with the appropriate agencies.
- d. Function as the County's representative/liaison to the Emergency Operations Center (EOC) Team for the activities and responsibilities carried out by the primary and support agencies of this ESF.
- e. Investigate all animal bites.
- f. Impound animals roaming at large. Provide for necessary quarantine of bite animals for observation.
- g. Facilitate the transportation of injured, stray, or nuisance animals to animal care facilities.
- h. Assist emergency response teams with animal-related problems.
- i. Make the arrangements for the removal and disposal of dead animals.
- j. Coordinate with the Escambia County Public Health Unit for the release of public information regarding animals and related health issues.
- k. Enforce the Escambia County Animal Control Ordinance.
- l. Euthanize sick and/or injured animals through assigned and authorized persons.
- m. Return wild animals to their natural environment.
- n. Respond to animal-related inquiries.
- o. Investigate animal cruelty and neglect complaints.
- p. Compile report data for inclusion into the incident action plan and information needed for public release through ESF 14.

2. SUPPORT AGENCIES

- a. Notify, activate, and mobilize all personnel and equipment to perform or support assigned functions.
- b. Designate and assign personnel for staffing of all facilities at which this Emergency Support Function is required, and providing representation when

it is determined by the primary agency of this Emergency Support Function to be necessary.

- c. Coordinate all actions of the support agencies through ESF 17 and Animal Control for the efficient and effective response and recovery efforts.
- d. Escambia County Mosquito Control Division of NESD provides consultation and advice in the control of arthropod pests of public health importance and of pestiferous mosquitoes, support in vector control measures, options, and strategies, as needed and required; conducting field investigations and laboratory analysis of relevant samples, providing vector control equipment, chemicals, manpower, and supplies as per authority and responsibility under Chapter 388, Florida Statutes and Chapter 5E-13, Florida Administrative Code; coordinate with Environmental Health to provide technical assistance and consultation on protective actions regarding vector-borne diseases and the presence of large populations of biting nuisance mosquitoes and other arthropods in the disaster area.

5E-13.036 Demonstrable Increase or Other Indicator of Arthropod Population Level. Mosquito and other arthropod control programs will insure that the application of pesticides are made only when necessary by determining a need in accordance with specific criteria that demonstrate a potential for a mosquito-borne disease outbreak or numbers of disease vector mosquitoes sufficient for disease transmission or defined levels of, or a quantifiable increase in numbers of pestiferous mosquitoes or other arthropods as defined by Section 388.011(1), F.S.

The above citation of Chapter 5E-13, Florida Administrative Code, is presented as information only as to one of our division's major responsibilities that may be employed as emergency protective measures within the disaster area.

These recommendations include some statutory language as well as that from FEMA's "Guidance on the Eligibility of Vector Control" and a FEMA Policy Statement, pending final agency approval.

- e. Escambia County Extension Services will maintain equipment and resources necessary to manage livestock in a disaster situation and provide, arrange, or assist in meeting the needs for the transportation of livestock and housing in the aftermath of an event
- f. Identify all personnel and resource requirements to perform assigned missions, which are in excess of the support agencies' capabilities.

G. FINANCIAL MANAGEMENT

1. During a response, each agency/department is responsible for recording and tracking its own expenditures and seeking reimbursement from the appropriate resource after the event.
2. Overall disaster expenditures will be summarized, coordinated, and reported through ESF 16 to the Finance Section for maintenance and summarization of overall disaster expenses for reporting and documentation purposes.

H. REFERENCES AND AUTHORITIES

- State ESF-17 Annex