

Emergency Support Function (ESF) 16 Law Enforcement

Primary Agency: Escambia County Sheriff's Office

Support Agencies: City of Pensacola Police Department
University of West Florida Police Department
Pensacola Junior College Police Department
Florida Department of Law Enforcement
Florida Department of Highway Safety and Motor Vehicles-
Division of Highway Patrol
Florida Department of Transportation - Division of Motor Carrier
Compliance
Florida Department of Environmental Protection, Division of Law
Enforcement
Florida Fish and Wildlife Conservation Commission- Division of
Law Enforcement
Florida Department of Juvenile Justice
Office of the State Fire Marshall
Pensacola Christian College
Escambia County Clerk of Circuit Court Administration

I. Purpose

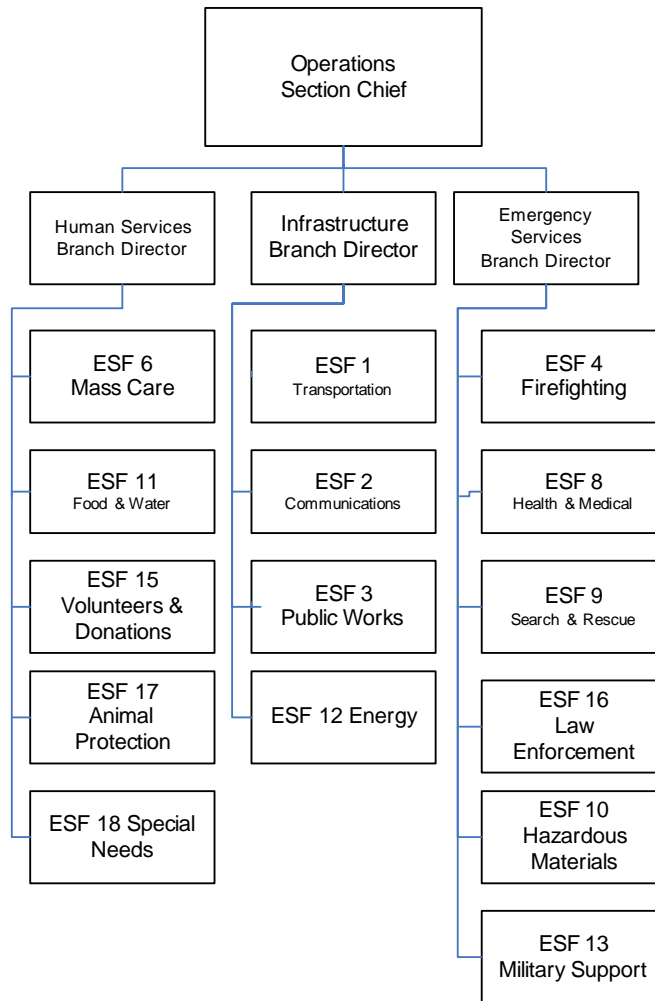
The purpose of Emergency Support Function-16 (ESF-16) is to provide law enforcement coordination and support services in support of emergency events in Escambia County. ESF-16 can provide personnel and resources to support preparedness, response, recovery and mitigation in support of the primary emergency management objectives. ESF-16 resources are used when individual agencies are overwhelmed and County Emergency Response Team requests additional law enforcement assistance.

II. Concept of Operations

A. GENERAL

1. ESF-16 is organized consistent with the State Emergency Operations Center and the requirements of the National Response Plan, the National Incident Management System, and the Incident Command System in order to provide incident assessment, planning, procurement, deployment, coordination and support operations to Escambia County Area Operations and State Emergency Response Team to assure a timely and appropriate response to an emergency or situation.
2. Procedures protocols and plans for disaster response activities are developed to govern staff operations at the Escambia Emergency Operations Center and in the field. These are in the form of the Comprehensive Emergency Management Plan (CEMP), and corresponding Appendices, Incident Annexes, Support Annexes and Standard Operating Procedures, which describe ESF-16 capabilities. Periodic training and exercises are also conducted to enhance effectiveness.

3. In a large event requiring local or State mutual aid assistance or Federal assistance, ESF-16 will coordinate with support agency counterparts to seek and procure, plan, coordinate and direct the use of any required assets.
4. Throughout the response and recovery periods, ESF-16 will evaluate and analyze information regarding law enforcement support requests, and develop and update assessments of the law enforcement resource status in the impact area, and conduct contingency planning to meet anticipated demands or needs.
5. When an event is focused in scope to a specific type or response mode technical and subject matter expertise may be provided by an appropriate person(s) from a supporting agency with skills pertinent to the type of event, who will advise and/or direct operations within the context of the Incident Command System structure.



Incident Command System Structure: ESF 16 – Law Enforcement

B. ORGANIZATION

1. COUNTY

- a. During an activation of the County Emergency Operations Center, all support agency staff are integrated with the Escambia County Sheriff's Office staff to provide support that will allow for an appropriate, coordinated and timely response to the field Incident Commander.
- b. During an emergency or disaster event, the Emergency Operations Center ESF-16 lead will coordinate the support resources from the support agencies with the Emergency Services Branch Chief.
- c. During the response phase, ESF-16 will evaluate, coordinate, and fulfill all valid requests for law enforcement resources. Also, ESF-16 will complete and update assessments and contingency plans for the law enforcement support services deployed or anticipated in the incident area.
- d. ESF-16 will coordinate and maintain all Comprehensive Emergency Management Plans, accompanying Appendices, and Standard Operating Procedures that govern response actions related to emergencies within the ESF 16 realm. Support agencies may develop and maintain supporting documents for agency use, which must be compatible with the overall CEMP. All such documents will be in compliance with the National Response Plan, The National Incident Management System, the Incident Command System and the County Comprehensive Emergency Management Plan.

C. ALERTS/NOTIFICATIONS

1. Upon activation of the CEMP, the Department of Public Safety will notify the point of contact for ESF-16 through multiple methods.
2. The Lead ESF 16 Coordinating Agency representative or designee will coordinate all activities of ESF-16.
3. Upon instructions to activate ESF-16, The Lead Coordinating Agency will implement procedures to notify and mobilize all personnel, facilities, and physical resources likely to be needed, based on the emergency circumstance.

D. ACTIONS

Actions carried out by ESF-16 are grouped into the phases. Each phase requires specific skills and knowledge to accomplish and requires significant cooperation and collaboration between all supporting agencies and the intended recipients of service. ESF-16 encompasses a full range of activities from training to the provision of field services. It also functions as a coordinator and, at times, assumes direct operational control of provided services. The following services may be provided but are not limited to:

- Scene security, intelligence, investigations or other special law enforcement services.
- Law Enforcement personnel.
- Law Enforcement Specialty Teams (SWAT, HDT, Forensics, Perimeter Security, Waterborne Response Teams.)
- Law Enforcement equipment and supplies.

- Evacuation and Re-entry support.
- Post event security and escort services.
- Law Enforcement Management - Command and control of assets.
- Law Enforcement activities related to terrorist threats and/or events.
- Catastrophic incident and alternate law enforcement service facility support.

1. PREPAREDNESS ACTIONS

- a. Actions and activities that develop law enforcement response capabilities may include planning, training, orientation sessions, and exercises for ESF-16 personnel (i.e., County, State, Regional, and Federal) and other emergency support functions that will respond with ESF-16. This involves the active participation of inter-agency preparedness organizations, which collaborate in such activities on a regular basis.
- b. Local and State law enforcement will coordinate planning issues.
- c. Coordinate planning with ESF-16 support agencies, Regional Domestic Security Task Forces, and other emergency support functions to refine law enforcement coordination and support operations.
- d. Develop and refine procedures to be used in response operations.
- e. Coordinate/ participate in training and exercises for EOC and response team members.
- f. Prepare and maintain emergency operating procedures, resource inventories, personnel rosters and resource mobilization information necessary for implementation of the responsibilities of ESF16.
- g. Develop and implement emergency response and law enforcement security and/or investigations services.
- h. Maintain liaison with support agencies.
- i. Conduct vulnerability analysis at critical facilities and make recommendations to improve the physical security.
- j. Participate in all hazards exercises involving ESF-16.

2. RESPONSE ACTIONS

- a. Coordinate operations of ESF-16 in the County Emergency Operations Center and/or at other locations as required.
- b. Establish and maintain a system to support on-scene direction, control and coordination with the local Incident Commander, the county EOC, Regional Domestic Security Task Force, and the State EOC, or other coordination entities as appropriate.
- c. Establish Mutual Aid and liaison procedures for the following resources; Urban and Light Search and Rescue, Physical Security, Traffic Control, Escort Services, Patrol, Intelligence and Investigations support, Interoperable Communications and other resources, as required.
- d. Resource Management and Logistical Support.
- e. Intelligence and Investigations support in the investigation of a suspected terrorist attack.

- f. Pre-position response resources when it is apparent that law enforcement resources will be necessary and be prepared to relocate resources to a safe area if they are endangered by the impact of the emergency situation.
- g. Monitor and direct law enforcement resources and response activities.
- h. Participate in EOC briefings, develop Incident Action Plans, Situation Reports and attend meetings.
- i. Coordinate with support agencies, as needed, to support emergency response activities.
- j. Obtain State resources through the Logistics Section coordinate all resources into the affected areas from designated staging areas.
- k. Coordinate with other county ESFs to obtain resources and facilitate effective emergency response among all participating agencies and jurisdictions.
- l. Support security mission for public shelters as needed and tasked.
- m. Support security mission for Points of Distribution/Dispersion as needed and tasked.
- n. Support security mission for County Staging Area as needed and tasked.
- o. Support resource escort mission in and around County as needed and tasked.
- p. Support law enforcement and security needs for the community in the aftermath of a disaster event as needed and required.
- q. Support security mission for search and rescue operations as needed and required.
- r. Support evacuation, re-entry, and traffic control mission as needed and required.
- s. Enforce evacuation orders as needed and required.
- t. Enforce and manage curfew mission as needed and required.
- u. Coordinate with other local ESF's and agencies for support resources in the effort to meet resource needs in completing mission assignments and tasks.
- v. Once local resources have been expended, coordinate with the Logistics Section to identify additional resources to meet the mission needs.
- w. Coordinate all activities and resources with all agencies of ESF 16 to efficiently and effectively utilize resources available.
- x. All actions, resource requests, etc. should be coordinated in the best interests of all ESF 16 agencies.

3. RECOVERY ACTIONS

- a. Continue to coordinate with all ESF 16 agencies and provide support as required to all operations as appropriate, until response activities are

concluded or until they can be managed and staffed by the primary incident agency or jurisdictions.

4. MITIGATION ACTIONS

- a. ESF 16 will work to mitigate organizational infrastructure through lessons learned from disaster event impacts and to improve operational readiness through after action reviews and reports noting areas for improvement both at the agency level and through ESF 16 and their operational cooperation.

E. DIRECTION AND CONTROL

1. ESF-16 system operates in two arenas; the County Emergency Operations Center; 2) field locations.
2. ESF 16 will operate under the ICS structure as identified in the EOC and the Lead Coordinating Agency will coordinate all activities and agencies under ESF 16 in meeting mission goals and tasks efficiently and effectively.
3. ESF 16 will operate in coordination with the IC through the event as appropriate and required.
4. ESF 16 will coordinate resources of lead and support agencies in meeting mission requests and requirements.
5. ESF 16 will coordinate the development and implementation of any required or needed operational plans and procedures to enhance the ESF 16 operations in collaboration with the support agencies.
6. ESF 16 will coordinate all operational information and status report through ESF 16 to the Operations Section Chief and will provide information available for reporting purposes and Incident Action Plan development to the Planning Section.
7. ESF 16 is comprised of many different law enforcement agencies, but will coordinate to act in unison in the best interests of the community and all the agencies involved.

F. RESPONSIBILITIES

1. PRIMARY AGENCY – ESCAMBIA COUNTY SHERIFF'S DEPARTMENT

- a. Provide leadership in coordinating and integrating overall County efforts to provide law enforcement assistance to affected areas, populations, and operations.
- b. Coordinate the activation and 24-hour staffing of ESF 16 as needed or required.
- c. Coordinate all activity, response, recovery, resource requests, resource deployment, resource management, and other law enforcement activity within ESF 16.

- d. Coordinate all resource requests to and from ESF 16 locally and through the logistics section as necessary.
- e. Will coordinate ESF-16 efforts in continuing to re-assess priorities and strategies, throughout the emergency, according to the most critical law enforcement needs.
- f. ESF-16 will demobilize resources and deactivate the ESF-16 station upon direction from the IC.
- g. Will coordinate all status reports and information from ESF 16 to the PIO, Planning Section, and Operations section Chief as needed, requested, or required for input into the EOC briefings and the development of the Incident Action plan and PIO press releases.

2. SUPPORT AGENCIES

- a. Support agencies will provide and coordinate assistance to the Emergency Support Function with services, staff, equipment, and supplies that compliment the entire emergency response effort.
- b. The Department of Public Safety will provide EOC support, conduct briefings, direct needs assessments, distribute key information, and serve as liaison to the State EOC to request resources.
- c. Support agencies will coordinate all operational activity through ESF 16 to minimize duplication of effort and maximize the efficiency of resources.
- d. Support agencies will operate efficiently and effectively in the best interest of all agencies supporting disaster operations and may work outside their normal operations and jurisdictions in the effort to accomplish mission assignments as appropriate and required.
- e. Support agencies will coordinate all status report information and press release information through ESF 16 to the PIO, IC, and Planning Section for the development of press releases and the Incident Action Plan.
- f. The Florida Department of Law Enforcement, a state agency, is responsible for maintaining liaison with ESF-16 and providing support as requested. The agencies state responsibility is for the overall command and coordination of State ESF-16, and the deployment of State law enforcement assets to support affected local agencies.
- g. The Department of Highway Safety and Motor Vehicles, Division of Florida Highway Patrol, a state agency, is responsible for maintaining liaison with ESF-16 and providing support as requested. The agencies state responsibility is for assisting FDLE in the coordination of Regional and Highway Evacuation Lane Plan (HELP), evacuations, traffic control, road status closure information, high visibility patrol, and escorts. Furthermore, provide assistance in fixed post and other assignments as
- h. The Florida Fish and Wildlife Conservation Commission, Division of Law Enforcement, a state agency, is responsible for maintaining liaison with ESF16 and providing support as requested. The agencies state responsibility is for conducting waterborne security evacuations, search and rescue, waterborne law enforcement, and patrol of rural natural areas, assist FDLE with communications issues and assist in mission requiring four-wheel drive, all terrain vehicles, vessels or aircraft. Further, provide assistance in fixed post and other assignments as required.

- i. The Department of Transportation, Division of Motor Carrier Compliance, a state agency, is responsible for maintaining liaison with ESF-16 and providing support as requested. The agencies state responsibility is for assisting FDLE in coordinating size, weight and registration requirements as they pertaining to the movement of relief supplies and recovery equipment, including lowering size and weight restrictions and establishing fixed post assignments associated with Florida's transportation infrastructure, provide assistance as required.
- j. The Department of Juvenile Justice, a state agency, is responsible for maintaining liaison with ESF-16 and providing support as requested. The agencies state responsibility is for assisting FDLE in coordinating activities and services, which may include but are not limited to; transporting of victims and/or supplies to disaster relief sites, providing temporary housing, preparing supplies for dissemination to disaster relief sites, assisting with the relocation of displaced citizens, assisting with food support services, providing limited, temporary manpower for restoration and cleanup, providing clerical/administrative support for command/communications centers.
- k. The DEP, Division of Law Enforcement's mission is to "protect the people, the environment, the cultural and natural resources, through enforcement, education and public service". The Law Enforcement Program is responsible for statewide environmental resource law enforcement and providing basic law enforcement services to the state parks, Greenways and trails.

G. FINANCIAL MANAGEMENT

1. During a response, each agency/department is responsible for recording and tracking its own expenditures and seeking reimbursement from the appropriate resource after the event.
2. Overall disaster expenditures will be summarized, coordinated, and reported through ESF 16 to the Finance Section for maintenance and summarization of overall disaster expenses for reporting and documentation purposes.

H. REFERENCES AND AUTHORITIES

- State ESF-16